

Sectra Table

User Guide



Table of Contents

About.....	3
How to handle the Sectra Table	3
Proper operation	3
Prohibited operations.....	4
Moving the Sectra Table.....	4
Content of the box	5
1. Getting started.....	6
1.1 The Sectra Table	6
1.2 Switching the Sectra Table on and off	7
1.3 Connecting the Sectra Table to the internet	8
1.4 Initial login to Windows	8
2. How to tilt and lift the monitor	9
2.1 Tilting and lifting	9
2.2 Tilt and lift safety	10
2.3 Initialization of CBD6 controlling	10
3. System specifications	10
4. Maintenance.....	10
5. Support and troubleshooting.....	11
5.1 Error codes	11
5.2 Initialization	12
5.3 Troubleshooting	13

About

The purpose of this document is to guide you through the installation, operation, and servicing of the Sectra Table. It also contains technical specifications and other relevant information about this product. This document is aimed towards those who install, use, or administer the Sectra Table.

Please read this document before using the product and pay careful attention to the warnings and cautions. After this document has been read and understood, the Sectra Table can be used in the appropriate manner without damaging the Sectra Table or harming yourself or others.

Keep the User Guide with the Sectra Table for future reference.



Caution:

*Always check visual cables, control pad, buttons, and wheels for damages before usage.

*Always check product functionality before usage.

*You may only operate the Sectra Table after the complete reading and understanding of this User Guide

Note: The Sectra Table must be operated as mentioned in this User Guide. Maintenance and reparations are the responsibility of Sectra. It is not allowed to modify and/or enhance the Sectra Table with other features without the written permission from Sectra. Otherwise, we cannot assure safety and a proper operation of the Sectra Table, and all warranties will become null and void.

How to handle the Sectra Table

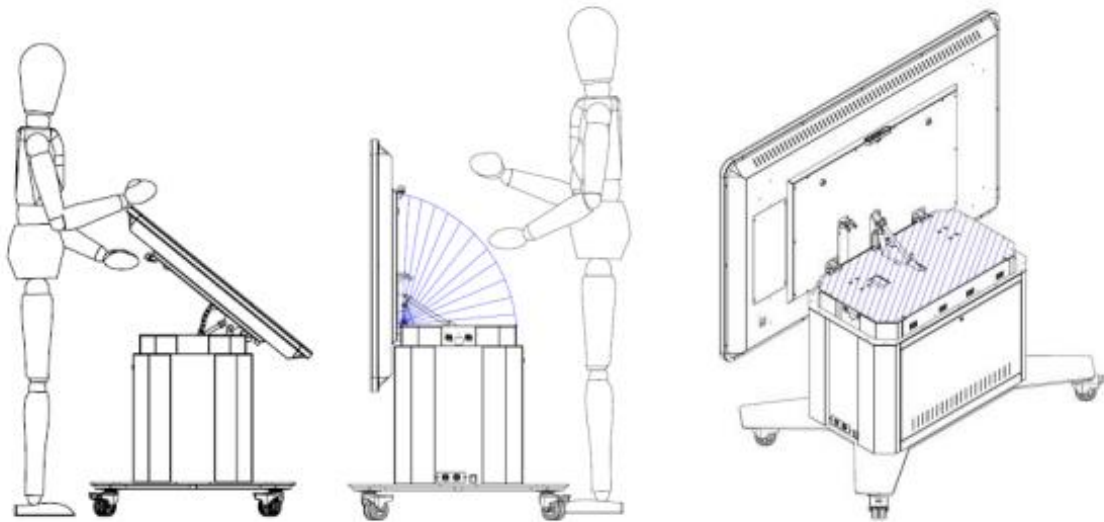
Before using the Sectra Table, please read how to properly handle it to minimize the risk of damaging it or harming yourself or others.

Proper operation

Keep the following in mind for proper operation:

- » It is not allowed to operate the Sectra Table in a toxic, explosive, corrosive environment, or a dusty environment. You could harm the electronics on both the outside and inside.
The Sectra Table is for indoor use only.
- » The operating temperature should be between +10 Celsius and +30 Celsius.
- » The surface on which the Sectra Table stands should be flat, solid, free of obstacles, and free of holes.
- » The Sectra Table is not a lift and may not be used like one.
- » The wheels must be locked before operating the Sectra Table.
- » From the moment of using the Sectra Table operation movements, the operator takes full responsibility for ensuring it is being handled correctly.
- » Please make sure nobody is standing too close to the Sectra Table while operating it.
- » Before moving the Sectra Table, read [Moving the Sectra Table](#) to prevent any physical damage.
- » The person who adjusts the monitor position must, to not risk injury, place their other hand on top of the Sectra Table monitor.

- » Before adjusting the position of the monitor, make sure that nothing is in the indicated areas, shown in the image below, to prevent something getting stuck between the Sectra Table and the monitor.



Prohibited operations

The following operations are prohibited to reduce the risk of damaging the Sectra Table:

- » Do not lean on the Sectra Table.
- » Do not put items or a load on the Sectra Table.
- » It is not allowed to clean the Sectra Table with water or other fluids. Follow the directions in section [4 Maintenance](#) for cleaning the Sectra Table.
- » Do not move or use the Sectra Table on an uneven surface.
- » Do not use the Sectra Table for transportation of people or goods.
- » Do not push or pull the monitor while using or moving the Sectra Table.
- » Do not use anything else than your hands or appropriate tools, touch pen etc., on the touch surface.
- » Do not open the PC or monitor in any other way than described in this User Guide. The warranty will be voided.
- » Do not make repairs without the cooperation of a Sectra qualified technician. Contact your distributor if any repair is needed.

Moving the Sectra Table

If the Sectra Table needs to be moved, make sure to follow the points listed below:

- » Only move the Sectra Table when the monitor is horizontal and in the lowest position. (See subsection [2.1 Tilting and lifting](#) for how to tilt the monitor)
- » Ensure that all external cables (power, HDMI, USB, network) are disconnected from the Sectra Table. Do this even if the Sectra Table is only moved for a short distance.
- » Make sure that all the wheels are unlocked.
- » To minimize the risk of damage, the Sectra Table must be moved with a minimum of two persons. One at the front and one at the back of the Sectra Table.
- » It is not allowed to move the Sectra Table over a surface which is not flat.
- » Remove all obstacles (cables, rocks etc.) that might be in the way.

- » Move the Sectra Table slowly.
- » If the Sectra Table needs to be moved over small obstacles (doorsteps, etc.), lift it from the base.
- » Be careful not to bump the Sectra Table while moving it.
- » Do not move the Sectra Table up steep slopes. Only slight gradients are allowed.
- » If the Sectra Table needs to be moved under conditions that do not fit the requirements above, then it must be placed in a flight case and moved.



Caution when moving the Sectra Table to prevent damaging it and/or causing injuries to yourself and/or others.

Content of the box

The following items are included within the product packaging:

- » 1 x Sectra Table
- » 3 x Power cables (EU/UK/USA)
- » 1 x Ethernet cable
- » 1 x Keyboard
- » 1 x Key (to open the Sectra Table base)
- » 1 x Quickstart guide

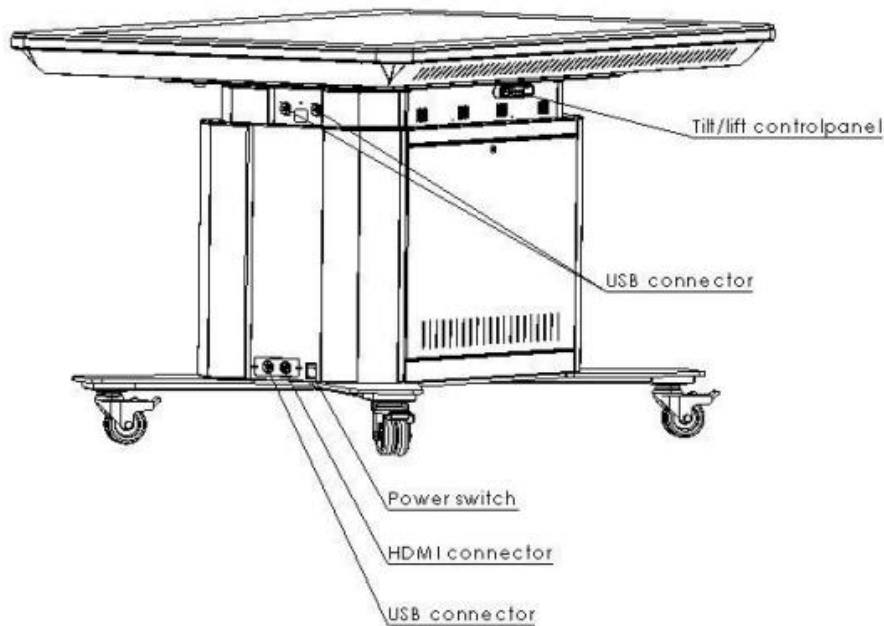
If any of the listed items are not found within the packaging, contact your distributor.

1. Getting started

This section will introduce you to the Sectra Table and guide you through the steps to set it up.

1.1 The Sectra Table

The figure below depicts the Sectra Table. In this User Guide, the side of the Sectra Table shown in the figure below with the “Tilt/lift control panel” will be referred to as the ‘back’ of the Sectra Table. Accordingly, the opposite side will be referred to as the ‘front’, and the remaining two sides as ‘left’ and ‘right’ relative to the front side.

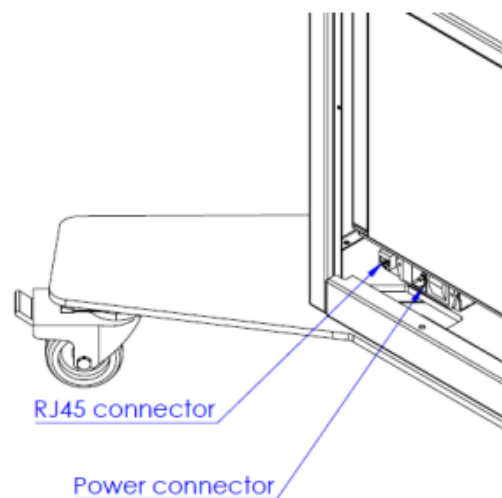


The Sectra Table has several connections and buttons. On the outside of the Sectra Table, the following can be found:

- » Two USB connectors (right side, top).
- » One USB connector (right side, bottom).
- » One HDMI connector (right side, bottom).
- » One main power switch (right side, bottom), to switch on the Sectra Table.
- » One tilt & lift control panel (back side, back side of monitor), to tilt and lift the Sectra Table.

Inside of the Sectra Table, the following connections can be found:

- » The Sectra Table's main power connector and an ethernet (RJ45) connector, as shown in the image below, which is located at the back side of the Sectra Table.
- » An HDMI connection, for connecting the PC to the external HDMI connector on the side of the monitor.
- » A power connection, for connecting the mains to the PC.
- » A USB cable labeled 'touch', connecting the touch to the PC.
- » A DisplayPort connector for connecting the PC to the monitor.
- » Three USB 2.0 connectors, for connecting the three USB connectors in the side of the Sectra Table.



1.2 Switching the Sectra Table on and off

To switch on your Sectra Table you need to plug the power cable into the power connector shown in subsection [1.1 The Sectra Table](#). The power connector is located behind the panel on the back left side of the Sectra Table. The panel does not need to be opened because there is a hole underneath the Sectra Table to insert cables.

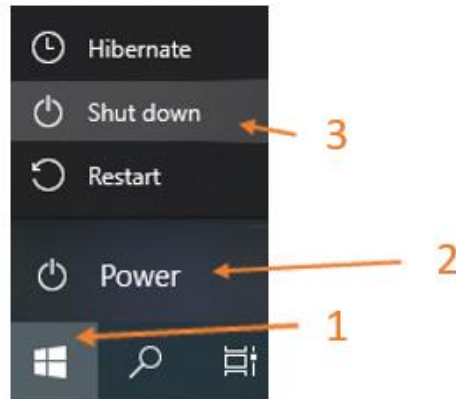
However, if you would like to see where the power connector is then the panel can be opened using the key included in the Sectra Table packaging. Insert the power cable into the power connector via the hole underneath the Sectra Table and connect the other end of the cable to a power source and then flip the red power switch, see subsection [1.1 The Sectra Table](#), to turn the Sectra Table on. The monitor and PC are setup to power up when the Sectra Table is switched on.



When switching on the Sectra Table, it must have been off for at least one (1) minute before. If you flip the power switch from off to on too quickly the PC will not start.

To safely shut down your Sectra Table follow these steps, otherwise a PC error may occur:

1. Turn off the PC:
Start → Power → Shut down.



2. Switch off the Sectra Table by using the red power switch, see subsection [1.1 The Sectra Table](#).



If you switch off the Sectra Table before powering off the PC, you risk damaging the software.

1.3 Connecting the Sectra Table to the internet

To connect the Sectra Table to the internet, there is the option of using a wireless or a wired connection (recommended). For wireless, connect the Sectra Table to your Wi-Fi network. For a wired connection, plug in one end of an ethernet cable to the RJ45 connector mentioned in subsection [1.1 The Sectra Table](#) via the hole underneath the Sectra Table, and plug the other end of the cable to an ethernet port with a stable internet connection.

1.4 Initial login to Windows

Once the Sectra Table is set up and switched on, you will be presented with the Windows Login screen. When logging in to Windows for the first time, use the following credentials:

Username: SuperUser

Password: abc123



To ensure security of your system, please change these passwords after the first login to a password that meets your institution's password requirements, and do not post or share these credentials outside of your institution.

2. How to tilt and lift the monitor

Refer to [How to handle the Sectra Table](#) for how to handle the Sectra Table while lifting and tilting the monitor.

2.1 Tilting and lifting

The tilt and lift operations of the Sectra Table are controlled by the ‘tilt/lift control panel’ described in subsection [1.1 The Sectra Table](#). The layout of this control panel is shown below:

∧ = Up

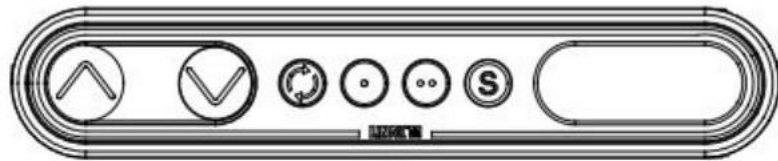
∨ = Down

⊙ = Toggle button

• = Memory 1

•• = Memory 2

S = Store memory



The motion of the monitor is controlled by the up (∧) and down (∨) buttons, which move the monitor up and down or adjust the tilt angle from the horizontal, respectively. To activate either function, press and hold the respective button until the desired height/tilt angle is reached.

The toggle button (⊙) is used to switch between the lift and tilt functions. When pressing the toggle button, the control panel display (right component in the image above) shows the reference number of the function. The number “1” (function 1) represents the lift function, and the number “2” (function 2) represents the tilt function. Press this button to change between the lift and tilt functions.

If the Sectra Table is above a certain height, the tilt function is disabled. After tilting the monitor at a low height, it is possible to move the Sectra Table to its full height at that tilt angle.



The control panel also has a memory function, so that you can easily move the Sectra Table to the height and tilt you prefer. You can store two positions into memory. To store a position into memory, follow these steps:

1. Press the (S) button. The display will flash for two seconds.
2. Within these two seconds, press either of the storage buttons (●) or (●●).
3. The display on the control panel will acknowledge your choice by showing a “1” or a “2”, and your position will be saved to that storage.

To utilize the memory function and move the Sectra Table to one of your saved positions, press the relevant memory button and keep holding it until the Sectra Table has moved to the desired position.

2.2 Tilt and lift safety

The following safety provisions apply to the lifting and tilting functions of the Sectra Table:

- » The up/down motion is protected by the Linak Piezo system. The built-in Piezo sensor detects obstacles while the Sectra Table moves up or down, then stops and moves in the opposite direction to avoid clamping.
- » The tilt is protected by an overload detection.
- » The system will only stop when the set force is exceeded.
- » If there is an error, it will be displayed on the control panel.
- » The lifting and tilting system is protected against superheating of the system.

2.3 Initialization of CBD6 controlling

If any problem with the tilting or lifting occurs, an initialization of the CBD6 controller could solve it. Look at subsection [5.1 Error codes](#) for more details regarding the Sectra Table errors, and how to handle them.

The initialization of lifting/tilting is done by following these steps:

1. Place the Sectra Table in its lowest position in either lifting or tilting, depending on the problem.
2. Press and hold down the down arrow on the control panel for 30 seconds.

3. System specifications

You can find information about the system specifications for the Sectra Table and its PC on the Sectra Education Portal (www.epsectra.com).

4. Maintenance

The Sectra Table should be maintained to keep it in good operating condition, and to prolong its lifespan.

Before using the Sectra Table:

- » Check that all the cables are connected.
 - Ensure that all the cables are undamaged.
- » Check if all the moving parts can move freely.
- » Listen for strange sounds that might indicate a problem.

Once every two months, if the Sectra Table has not been used for a long time:

- » Check if the screws for the fixation of the Linak parts, that perform the lift and tilt functions, are secure.
- » Check if the pinch danger labels are visible on the Sectra Table.



If you find a problem with one of the above, please contact your distributor.

Cleaning the Sectra Table:

- » The glass can be cleaned with a glass cleaner.
- » Use a soft cloth to clean the glass.
- » Don't spray on the glass but on the cloth.
- » The steel can be cleaned with glass cleaner and a soft cloth.
- » The cleaner and/or disinfectant must not be highly alkaline or acidic (pH 6-8).
- » Use a vacuum cleaner to remove dust.



Note:

For storage, switch off the PC and Sectra Table as described in subsection [1.2 Switching the Sectra Table on and off](#).

The PC and Sectra Table should be turned off periodically to maintain performance.

5. Support and troubleshooting

The following section will guide you through how to handle error codes on the tilt/lift control panel, and how to troubleshoot the system.

5.1 Error codes

Below you will find the most common error codes, which can be displayed on the tilt/lift control panel. The error codes will only be displayed when a button is pressed. The display will blink while showing the error code.

Error	Description
E01	The table has an unknown position and needs to be initialized.
E02	Overload in upwards direction has occurred.
E03	Overload in downwards direction has occurred.
E16*	Illegal keys are pressed.

*The E16 error will overrule any other errors.

When the error code E01 occurs, the Sectra Table needs to be initialized.


5.2 Initialization



Before completing the initialization, note the following:

- » Ensure that there is nothing in or on the Sectra Table. For this to work the Sectra Table goes to its lowest position.
- » If something is preventing the Sectra Table to reach the lowest position the initialization will not work.
- » It is not possible to abort the initialization, once started it must be completed.

To initialize the Sectra Table, follow these steps:

1. Push the toggle button () to change to the lift function.
2. Push the down button (∨) until there is no more movement.
3. Release the down button.
4. Press the down button again and hold it. After about 30 seconds the actuator(s) will go down to its lowest position, at this point the actuator(s) will move a bit up.
5. Do the same for the tilt function.

Sometimes it is necessary to do the initialization more than once. The lift and tilt motions of the Sectra Table are controlled by the control box that is inside the Sectra Table.



Only use a control box that is supplied by Sectra. If the control box is not correctly programmed, the tilting does not stop at its vertical point and will cause damage to the Sectra Table and/or actuator. Also, Sectra's supplied control box has a programmed limit on the height the Sectra Table can be lifted.



Do not lift or tilt the Sectra Table for more than two minutes continuously. Exceeding this limit will result in a dramatic reduction of the lifetime of the system.

5.3 Troubleshooting

Please perform the following checks and actions before escalating to support, which is your distributor. Provide the service-tag of the unit (a 7-character code located on the top of the PC case) when escalating, and any pictures or videos that may assist with the support process.

Issue	Check and actions
The Sectra Table does not work (no power).	<ul style="list-style-type: none"> » Check that the power cable is attached to the power connector at the bottom of the Sectra Table. See 1.1 The Sectra Table » Is the power strip (inside the Sectra Table, behind the PC) connected to the power connector? » Does the red power switch light up when turning the power on? See 1.1 The Sectra Table
The Lifting/Tilting does not work.	<ul style="list-style-type: none"> » Check cables to the CBD6 and all the connections and cords inside the Sectra Table base that they are connected and undamaged. » Initialization of the Linak system. See 2.3 Initialization of CBD6 controlling.
The touch function does not work.	<ul style="list-style-type: none"> » Restart the Sectra Table. » Put the “TOUCH” labeled USB cable in another USB port and check that Windows recognizes the hardware. » Shut down the Sectra Table and disconnect it from the wall outlet for at least 60 seconds. » Check if other USB devices perform well on the PC, if the PC is turned on and the USB area doesn’t work then it might be a low power/voltage issue, check the wall outlet with a multimeter.
The monitor does not display anything.	<ul style="list-style-type: none"> » Turn on the monitor by remote control (check batteries) and wait 10-15 seconds for the monitor to turn on. » Make sure that the PC Power Options/Energy settings have no screensaver enabled. » Make sure that the monitor source signal is set to DisplayPort. » Check that the monitor power cable is firmly plugged in the black internal power strip inside the Sectra Table (behind the PC). » Check the connection to the PC and monitor that it is connected and undamaged.

Issues with VH Dissector (VHD).	<ul style="list-style-type: none">» Unplug external hard drives from the Sectra Table when upgrading VHD.» The VHD may be reinstalled unlimited times with the same license product key if no major change is executed on the operating system or the PC.» If issues with the VHD, please add your VHD product key to your report to your local Sectra partner/retailer.
Wrong resolution.	<ul style="list-style-type: none">» Make sure the zoom on the desktop is set to 100%.» The correct resolution is 3840 x 2160.

SECTRA

Knowledge and passion