

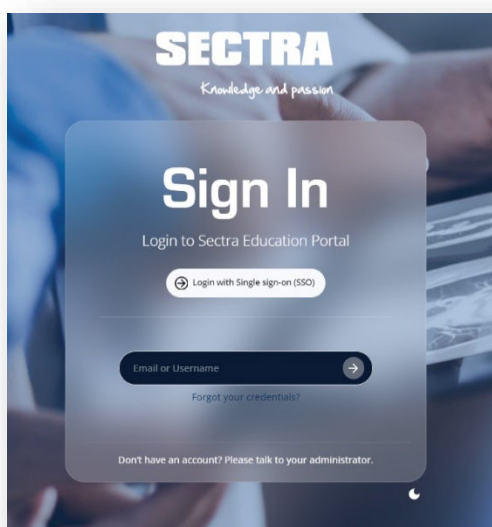
Dissector Atlas

How to install Dissector Atlas

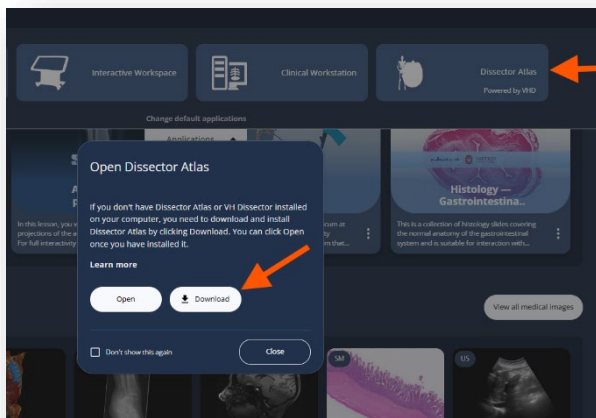
- » Dissector Atlas is available for everyone with access to Sectra Education Portal.
- » You can access Dissector Atlas using a Mac or a PC.
- » You need to have a stable internet connection when installing Dissector Atlas.

	Minimum	Recommended
Operating System	Microsoft Windows 8.1* macOS 10.14	Microsoft Windows 10 macOS 11.4
Architecture	Windows: x86-64 macOS: x86-64, ARM64*****	
Processor	Intel 4th Generation i5	Intel 6th Generation i7, Apple M1*****
Memory	8GB of RAM	16GB of RAM
Graphics	Intel HD Graphics 4600 2GB VRAM***	Intel Iris Graphics 540 2GB VRAM***
Graphics API	Windows: Direct3D Feature Level 11_0 macOS: Metal****	
Storage	2.8GB of available hard-disk space	
Network	Internet connection for installation, activation and lesson access	

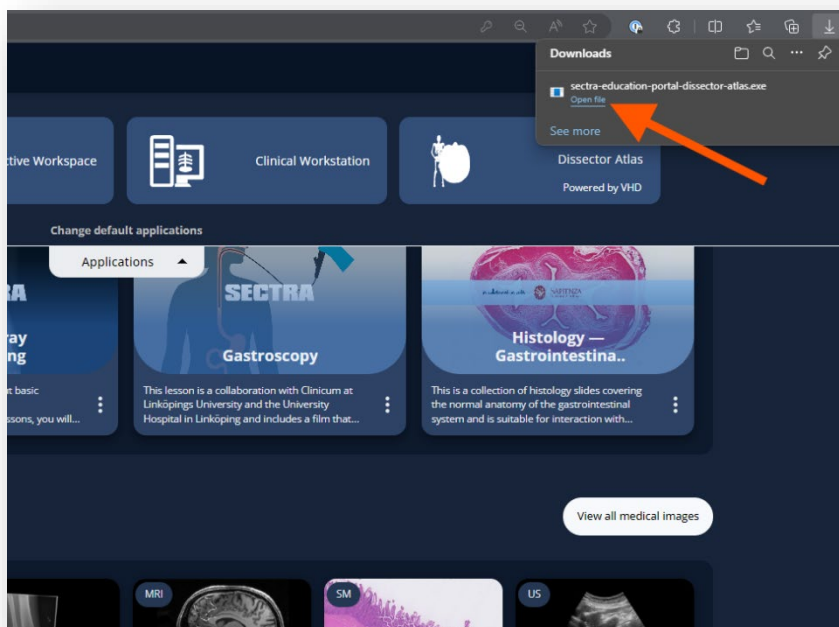
1. Log in to epsectra.com/home using the credentials given to you when first activating the account.



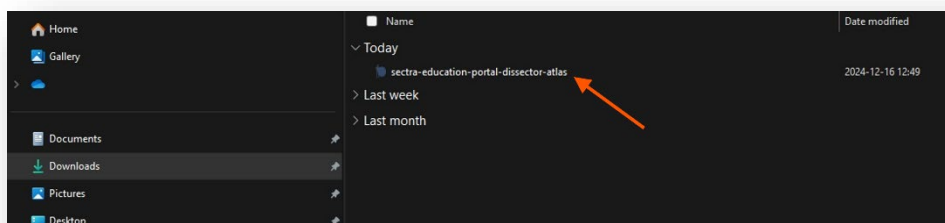
2. Open the Applications menu then click on the Dissector Atlas button followed by Download.



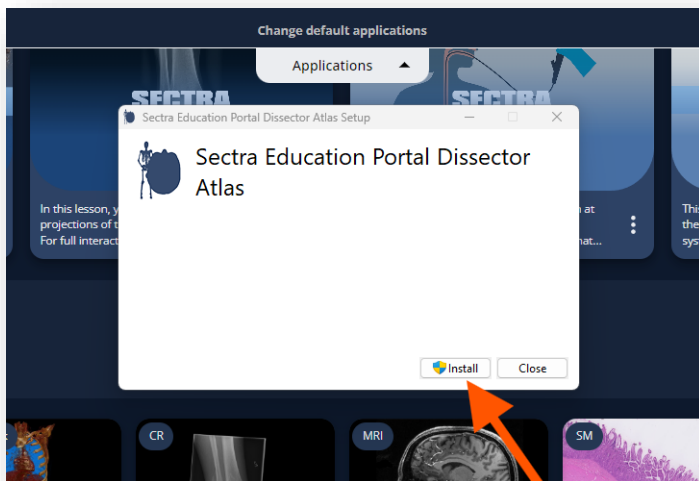
3. Wait for the download to finish and then click on Open file.



If you cannot find the Open file button you can find the downloaded file in the local download folder. Double click on the file to open it.

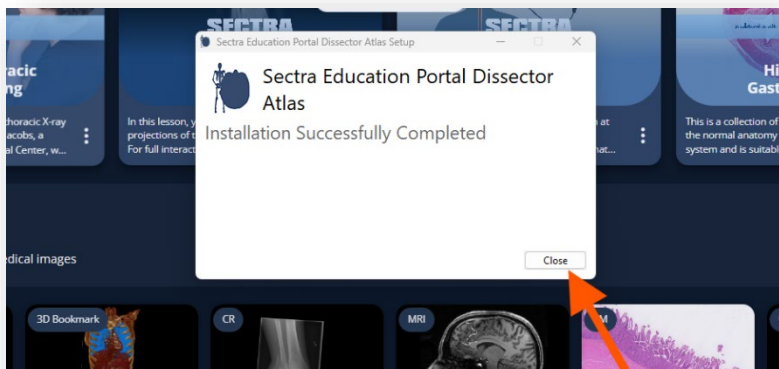


Click on Install.

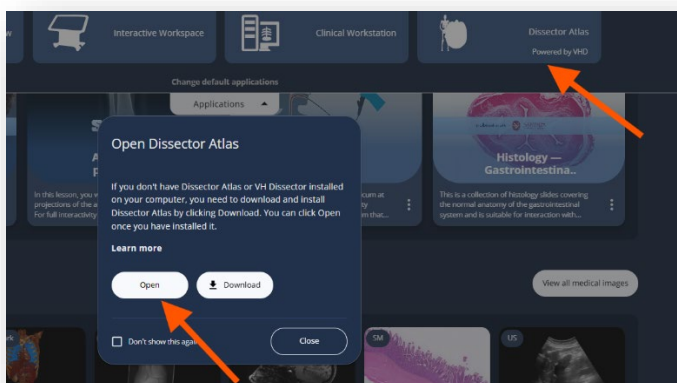


If prompted, approve that the file will be installed on your computer. You might need assistance from the IT-department of your institution if you don't have administrator rights on your computer.

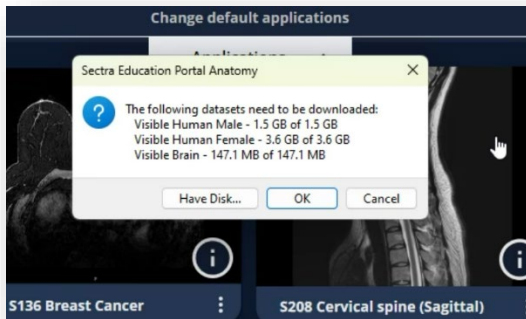
You will see this pop-up when the installation is finished. Click on Close.



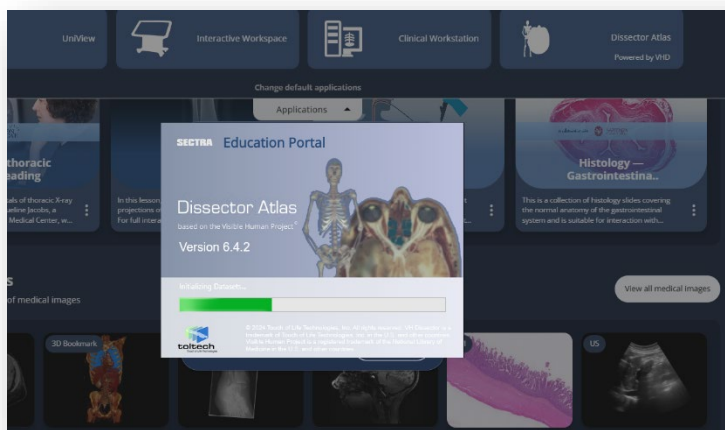
4. Now click on the Dissector Atlas button and then Open.



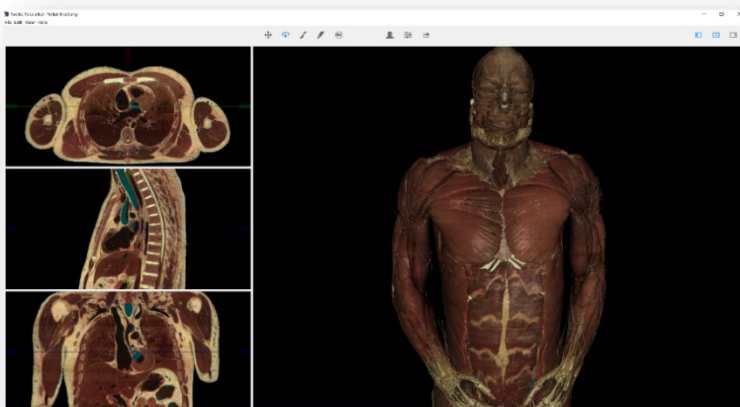
5. The first time you open Dissector Atlas you might be asked to download the dataset. Click OK and wait until it has been downloaded. Make sure you have a stable internet connection and be aware of that the size of the dataset is about 5 Gb.



You are able to follow the progress.



6. When completed, Dissector Atlas will open automatically, and you are ready to explore the human anatomy.



7. The next time you want to open the Dissector Atlas, start from instruction number four and click the Dissector Atlas button, followed by Open. Check the Don't show this again box to open the Dissector Atlas directly from the Dissector Atlas button in the future.

